

PPPoE(IPv4) Configuration Guide

*No configuration is required for IpoE (IPv6) connection

1



Please plug in the NTT modem, and the modem to your computer by LAN cable.

If you don't have LAN cable, see wireless set-up instruction first and connect your PC to the NTT device wirelessly.

2



Turn on the computer, open the internet browser such as Internet Explorer, Google Chrome, Firefox, Safari, and enter <http://192.168.1.1/> or <http://ntt.setup/>, and hit Enter.

3

Enter NTT modem's password as ②~④ below.



Note: If you forgot the NTT modem's password, plug the power cord as you pressing the Reset ("初期化") button at the front of the modem and wait for a few minutes.

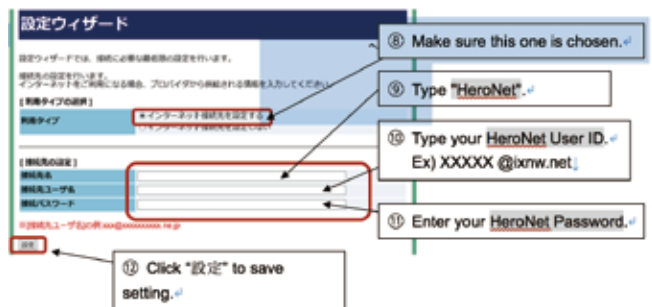
4

The window below appears prompting for a "User Name" and "Password". ⑤~⑦



5

The NTT modem's web-based setup page appears, enter "username" and "Password" which were provided by HeroNet. ⑧~⑫



6



If all the information entered in STEP 5 is correct, green light for PPP on NTT modem will be turned on, and the Internet is now ready to use.

*NTT modem will be restarted after the alarm light turns off. Please wait until the PPP light turn



If the second red light is on, the firmware is being updated. Please wait until the PPP light turns green.



The alarm light might turn red after PPP light turns green. Please leave it on until the alarm light turns off. Please do not click anything on the setting page on the Internet browser.